

# Model ECO Triangle lounge

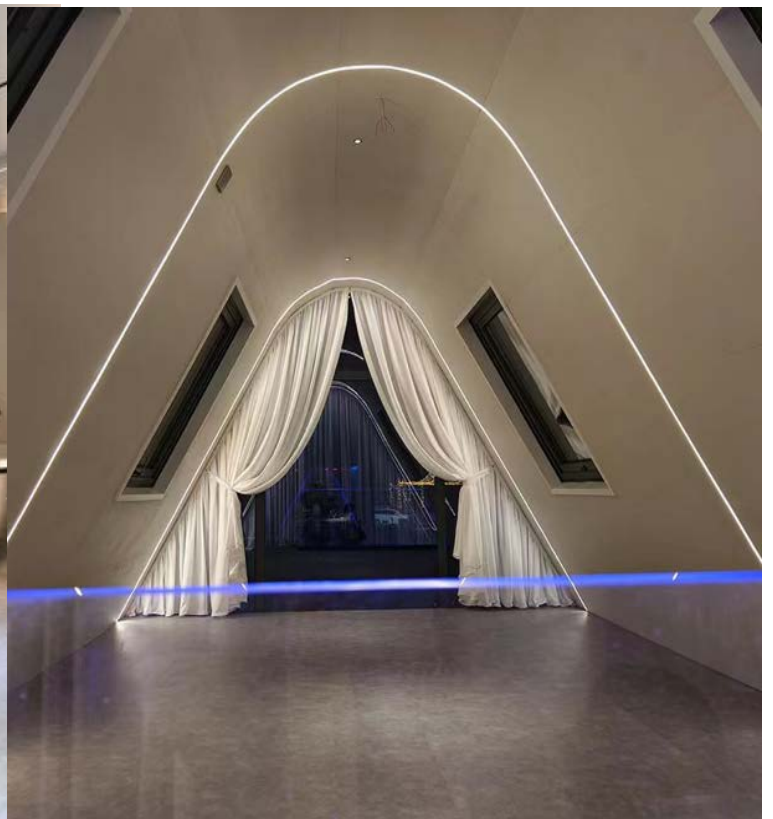
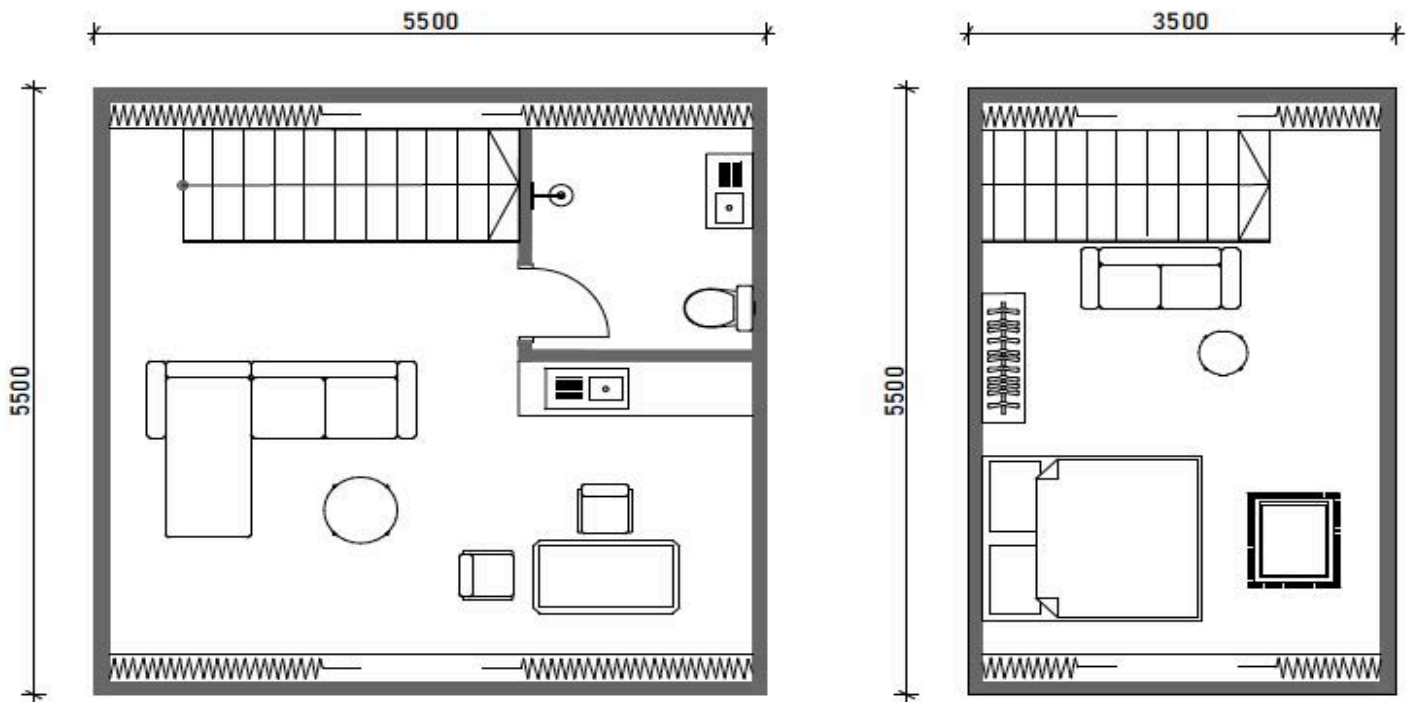


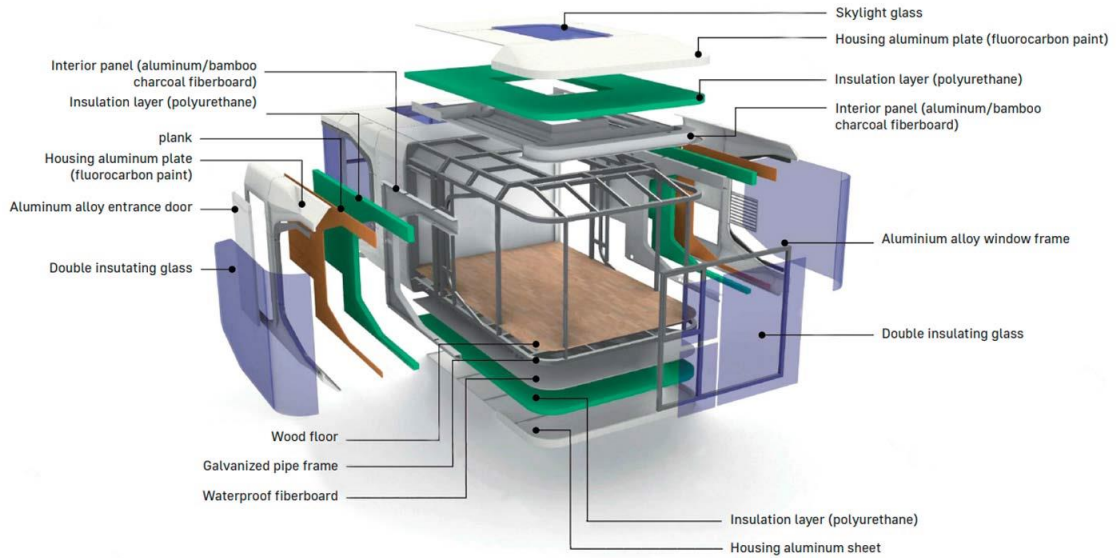
**Exterior dimension: 5,5\*5,5\*5,2m**

**Building area: 49,5 square meters**




# Model ECO Triangle lounge





### Standard Edition - Configuration List

Serial number	Configuration Content	Configuration	Remarks
<b>1、 Main structure outer frame</b>			
1	Overall steel structure: The main frame is made of 0.3CM hot-dip Galvanized square pipes	Standard	
2	Outer wall: metal carved board	Standard	
3	Toilet wall: 0.25cm hot-dip galvanized square tube +waterproof seam woven polyester fabric	Standard	
4	Thermal insulation structure: anti obstruction thermal insulation Layer (80mm polyurethane material)	Standard	
5	Glass curtain wall: 0.8CM tempered glass	Standard	
6	Advanced entry Apple cabin door: 0.35CM thick all aluminum alloy	Standard	
7	Customized Advanced intelligent door locks for hotels and homestays	Standard	
8	Peripheral atmosphere light strip: (24V) LED silicone waterproof Embedded light strip	Standard	
<b>2、 Interior decoration</b>			
1	Floor: 15mm waterproof and moisture-proof calcium silicate Board +reinforced waterproof and wear-resistant PE floor	Standard	
2	Graphene electric floor heating	Standard	
3	Ceiling wall: metal carved board	Standard	
4	Toilet wall: metal carved board	Standard	

5	Atmosphere light: Low voltage (24V) LED light strip surround	Standard
6	Main control box: household switch control box, weak current box	Standard
7	240V to 220V single-phase transformer	Standard
8	Socket: French standard with 2-bit USB	
9	Wardrobe: Voice controlled (24V) LED atmosphere light strip+customized solid wood ecological board	Standard
10	Toilet: stainless steel waterproof chassis+all copper floor drain+tempered glass+wear-resistant and anti slip floor tiles	Standard
11	Sanitary entrance door: stainless steel, tempered glass	Standard
12	Lighting down lamp	Standard
13	Toilet toilet: intelligent toilet	Standard
14	Bathroom mirror: anti fog intelligent mirror	Standard
15	Faucet: customized with pure copper	Standard
16	Shower: Customized with pure copper	Standard
17	Wash basin: ceramic customized version	Standard
18	Towel rack: multifunctional towel rack	Standard
19	High definition projector (including screen)	Standard
20	1.8-meter king bed, high-end leather, fabric sofa	Standard
21	Water heater: electric water heater 80 liters	Standard
22	Wall mounted air conditioning	Standard
<b>3、 Intelligent devices</b>		
1	Electric curtains (intelligent voice control)	Standard
2	Voice controlled air conditioning system	Standard
3	Intelligent control system for card insertion, power retrieval, and power outage	Standard
4	Hotel intelligent access control system	Standard
5	Internal intelligent ventilation and circulation system	Standard

EcoSpace will be pleased to offer you a profitable investment projects  
Do not hesitate to contact us for a free consultation

tel./WhatsApp: +34 6 98 99 85 85

e-mail: [ecospace823@gmail.com](mailto:ecospace823@gmail.com)

<https://www.eco-space.info>

