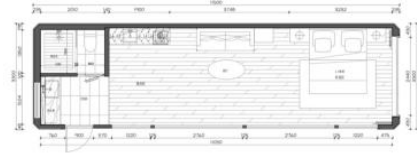


Company Name:	BUILDING SPACE ecospace823@gmail.com
Contact information WhatsApp:	+34 698 99 85 85
model:	Apple Cabin P7
Size:	Length: 11.5 meters, width: 3.3 meters, height: 3.2 meters
Area:	Approximately 38 square meters, 7 tons
Unit type:	1 room, 1 living room, 1 bathroom



Number	Configuration Content	remarks
—	Main structure outer frame	Configuration standards
one	The main frame adopts 0.3CM hot-dip galvanized square pipes	Standard configuration
two	Aluminum plate	Standard configuration
three	Toilet wall: 0.25cm hot-dip galvanized square tube+waterproof seam woven polyester fabric	Standard configuration
four	Insulation structure: Anti flame and thermal insulation layer (80mm polyurethane material)	Standard configuration
five	Glass curtain wall: 6+6 hollow tempered glass	Standard configuration
six	Advanced entrance Apple cabin door: 0.35cm thick all aluminum alloy customized	Standard configuration
seven	Advanced custom entrance door	Standard configuration
eight	Advanced intelligent door locks for hotels and homestays	Standard configuration
nine	Peripheral atmosphere light strip	Standard configuration
two	Interior decoration	Configuration standards
one	Floor: 15mm waterproof and moisture-proof calcium silicate board+moisture-proof and environmentally friendly SPC floor	Standard configuration
two	Ceiling wall: Waterproof and moisture-proof carbon fiber wood decorative panel	Standard configuration
three	Main control box: household switch control box, weak current box	Standard configuration
four	Toilet wall: aluminum plate	Standard configuration
five	Indoor electric blackout curtain guide rail and motor	Excluding fabric curtains/gauze curtains
six	Atmosphere light: Low voltage LED strip surround	Standard configuration
seven	Wardrobe: Voice controlled LED ambient light strip+customized solid wood ecological board	Standard configuration
eight	Toilet: Stainless steel waterproof chassis+all copper floor drain+tempered glass+wear-resistant and anti slip floor tiles	Standard configuration
nine	Sanitary entrance door: stainless steel, tempered glass	Standard configuration
ten	Lighting tube lamp	Standard configuration
eleven	High end intelligent toilet in the bathroom	Standard configuration

twelve	Customized faucets and showerheads made of pure copper	Standard configuration
thirteen	Wash basin: ceramic customized version	Standard configuration
fourteen	Brand water heater 80 liters	1 unit
fifteen	Brand wall mounted air conditioning	1 unit
three	Smart devices	Configuration standards
one	Electric curtains (intelligent voice control)	Standard configuration
two	Voice controlled air conditioning system	Standard configuration
three	Intelligent control system for card insertion, power retrieval, and power outage	Standard configuration
four	Hotel intelligent access control system	Standard configuration
five	Internal intelligent ventilation and circulation system	Standard configuration
Total price Spain:		EURO 58500.00

Explanation:1. The above quote includes the cost of standard configuration contents, including taxes, freight, installation costs, unloading and on-site lifting costs.
2. The above products will be ready for shipment within 45 days from the receipt of advance payment from the factory, the specific period will be determined through mutual consultation and delivery time to the destination.
3. In accordance with the principle of long-term strategic cooperation, please keep this configuration confidential and do not disclose it to unrelated third parties.

EcoSpace will be pleased to offer you a profitable investment projects Do not hesitate to contact us for a free consultation

tel./WhatsApp: +34 6 98 99 85 85
e-mail: ecospace823@gmail.com
<https://www.eco-space.info>